

WINSTED TOWNSHIP

Each township has six files containing six sections in each, and one file containing all 36 sections.

Winsted01to06.pdf

Winsted07to12.pdf

Winsted13to18.pdf

Winsted19to24.pdf

Winsted25to30.pdf

Winsted31to36.pdf

WinstedAll36.pdf

The points are listed starting with the point above the SE corner and continuing in a counter-clockwise rotation around the section. This normally begins with the East point, Northeast, then North, but may also include Witness Corners, and/or Meander Corners.

Definitions

Witness Corner: A witness corner “stands in” when the true corner cannot be monumented or occupied because of difficult terrain or obstruction of the corner sight. The witness corner must be on the section line and is usually 5 or 10 chains away from the true corner.

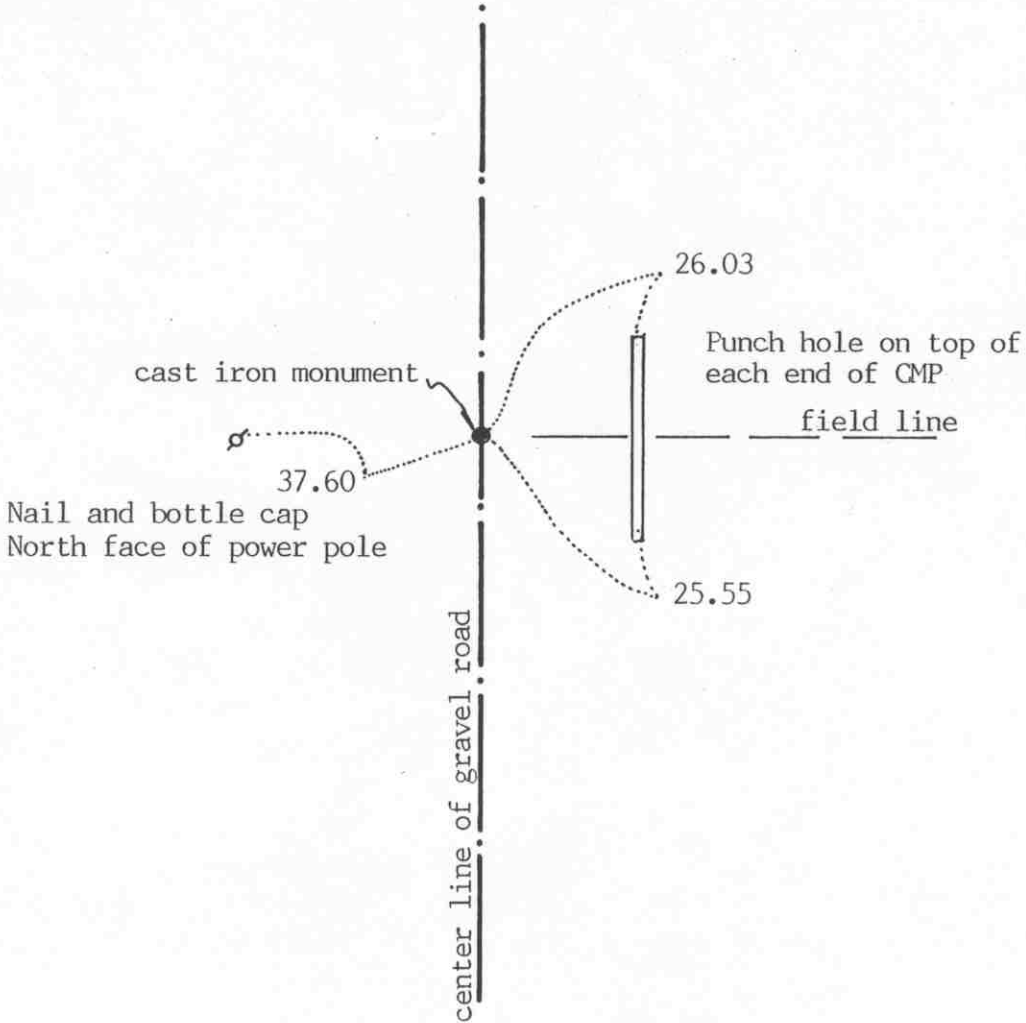
Meander Corner: The intersection of a township, range, or section line and the banks of a navigable stream or meandering body of water.

Certificate of Location of Government Corner



SKETCH OF REFERENCE TIES
(NO SCALE)

SECTION 19



SECTION 20

Statement of evidence relative to this corner location on sheet 2

I hereby certify that this document was prepared by me or under my direct supervision.

Willard Pellinen

Willard Pellinen
McLeod County Surveyor
License No. 9626

Date October 4, 1992

OFFICE OF THE COUNTY RECORDER
MCLEOD COUNTY, MINNESOTA.

I hereby certify that this document was filed in this office at 9 o'clock A.M. on the 7th day of October, 1992.

Carmen Ollie, County Recorder

By _____, Deputy

Document No. 248102

Certificate of Location of Government Corner

1856. E. N. Darling of the General Land Office established this corner. He set a post and marked an ash and a linden for bearing trees.

1899. E. L. Higgins, county surveyor, shows a stone at the corner and shows a distance of 2642 to 2646 feet to the northeast corner of Section 19.

June 24, 1977. McCombs Knutson Associates (Dickman Knutson, county surveyor) set a temporary corner 2644 feet south of the northeast corner.

June 27, 1977. Knutson dug for the corner, John Tupa from Hutchinson with a backhoe. They found a wood stake and below the stake, down 2 feet below the road surface, they found a 18 inch diameter stone and a rotted wood stake beside the stone. They took reference ties.

July 5, 1977. Knutson set a spike at the corner and took additional ties.

August 15, 1978. Knutson set a McLeod County cast iron monument at the corner.

March 6, 1992. We found the monument in good condition and checked the reference ties.

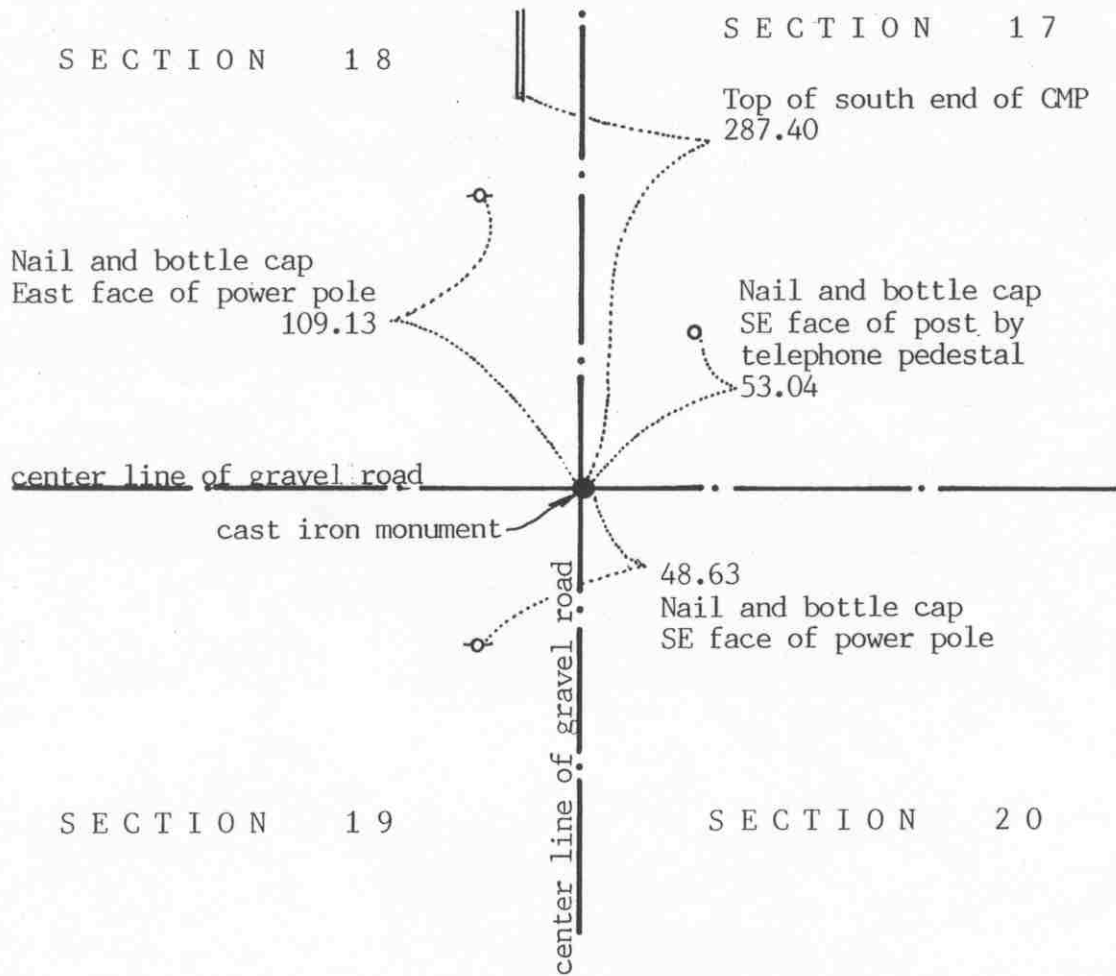
The monument set by Knutson is accepted as marking the correct location of the quarter corner. It perpetuates the location of an older monument, the stone, and it fits long standing occupation line, the center line of the road.

Certificate of Location of Government Corner



SKETCH OF REFERENCE TIES

(NO SCALE)



Statement of evidence relative to this corner location on sheet 2

I hereby certify that this document was prepared by me or under my direct supervision.

Willard Pellinen

Willard Pellinen
McLeod County Surveyor
License No. 9626

Date Oct. 11, 1992

OFFICE OF THE COUNTY RECORDER
MCLEOD COUNTY, MINNESOTA.

I hereby certify that this document was filed in this office at 9 o'clock A.M. on the 19th day of Oct, 1992.

Carmen Estelle Mulder County Recorder

By _____, Deputy

Document No. 248335

NORTHEAST corner, Section 19, Township 117 North, Range 27 West

Certificate of Location of Government Corner

1856. E. N. Darling of the General Land Office set a post and marked 2 elms and 2 linden trees for bearing trees.

1899. E.L.Higgins, county surveyor, set a stone at the corner.

May 9, 1972. McCombs Knutson Associates (Dickman Knutson, county surveyor) dug for corner, John Tupa from Hutchinson with a backhoe. Down 2 feet below the surface of the road they found a 5 inch diameter stone. They took reference ties and down 3 feet below the surface they found another 5 inch diameter stone. Down 4 feet below the surface, directly below the 2 stones, they found a wood stake.

October 30, 1972. Knutson set a McLeod County cast iron monument.

March 6, 1992. We found the monument in good condition down 8 inches below the surface of the road and we took new reference ties.

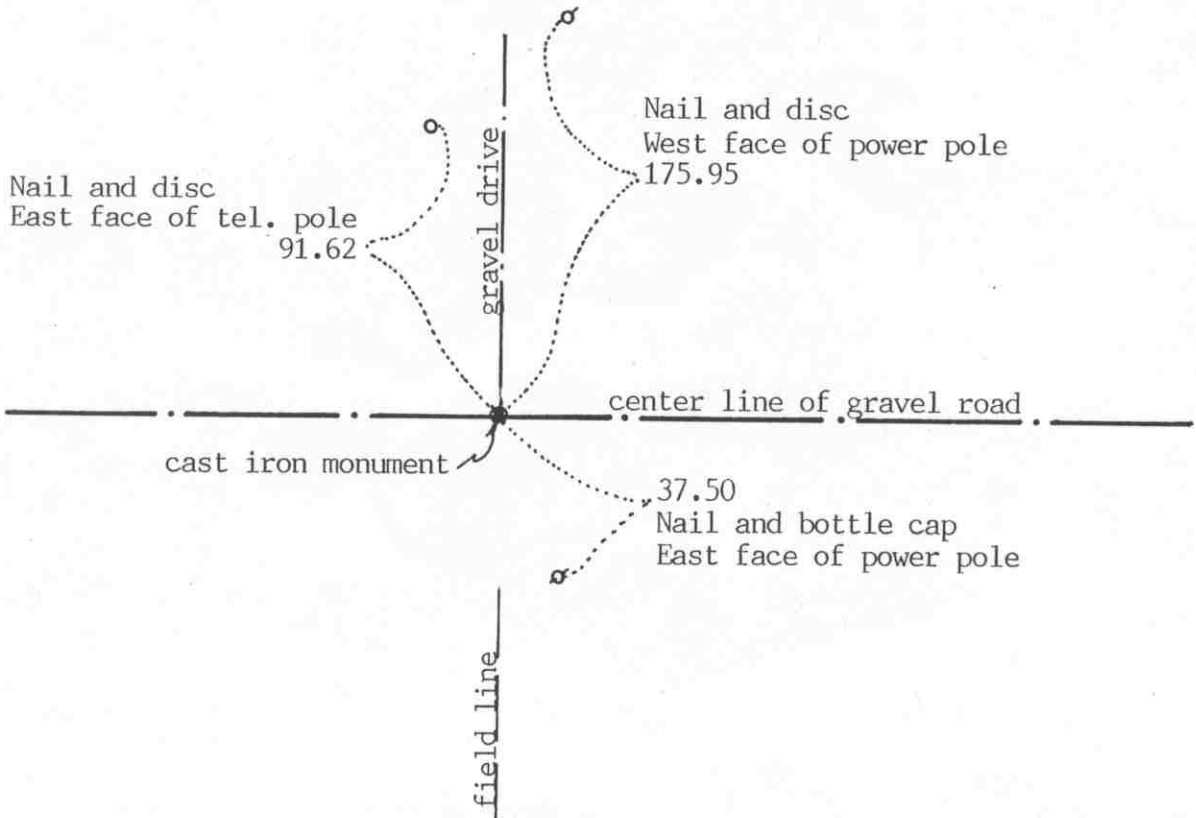
The monument set by Knutson is accepted as marking the correct location of the section corner. It fits occupation lines, the center line intersection of the roads and it perpetuates the location of older monuments, the stones and the wood stake.

Certificate of Location of Government Corner



SKETCH OF REFERENCE TIES
(NO SCALE)

SECTION 18



SECTION 19

Statement of evidence relative to this corner location on sheet 2

I hereby certify that this document was prepared by me or under my direct supervision.

Willard Pellinen

Willard Pellinen
McLeod County Surveyor
License No. 9626

Date Oct. 4, 1992

OFFICE OF THE COUNTY RECORDER
MCLEOD COUNTY, MINNESOTA.

I hereby certify that this document was filed in this office at 9 o'clock A.M. on the 7th day of October, 1992.

Carmen Ostlie, County Recorder

By _____, Deputy

Document No. 248103

NORTH QUARTER corner, Section 19, Township 117 North, Range 27 West

Certificate of Location of Government Corner

1856. E. N. Darling of the General Land Office established this corner. He set a post and marked an oak and a linden tree for bearing trees.

May 9, 1972. McCombs Knutson Associates (Dickman Knutson, county surveyor) dug for the corner, John Tupa from Hutchinson with a backhoe. They found a stone down 4 feet below the road surface. The stone was 12 inches by 12 inches on top with a chiseled mark on the high point of the stone. They tied it off and left the stone in place.

1972.

Mr Jerry Cuhel, 62 years old and had lived in the Southwest Quarter of Section 18 for 60 years old said a stone was found at the corner about 25 years ago. It was in line with the center line of the drive running north. Mr. F. Sherman, 69 years old, in the Southeast Quarter of Section 18 for 23 years, agreed with Mr. Cuhel.

October 19, 1972. Knutson set a McLeod County cast iron monument at the corner.

March 6, 1992. We found the monument in good condition and checked the reference ties.

The monument set by Knutson is accepted as marking the correct location of the quarter corner. It was set over an existing monument, the stone, which has perpetuated the location of the corner.

NORTHEAST corner, Section 24, Township 117 North, Range 28 West

Certificate of Location of Government Corner

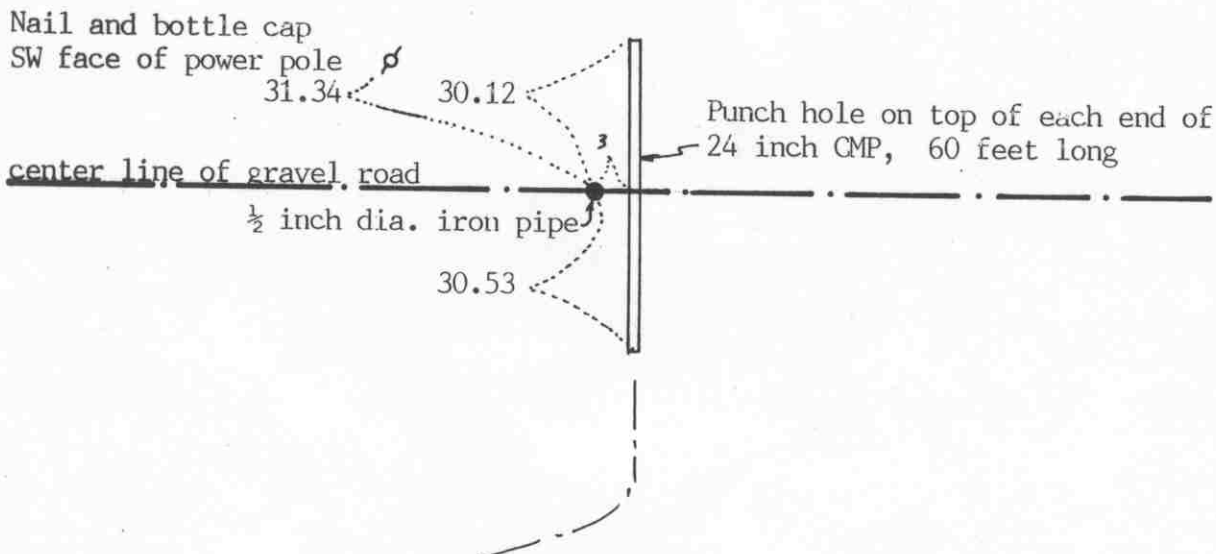
SKETCH OF REFERENCE TIES (NO SCALE)



SECTION 13
T. 117, R. 28

SECTION 18
T. 117, R. 27

center line
of ditch



SECTION 24
T. 117, R. 28

SECTION 19
T. 117, R. 27

Statement of evidence relative to this corner location on sheet 2

I hereby certify that this document was prepared by me or under my direct supervision.

Willard Pellinen
Willard Pellinen
McLeod County Surveyor
License No. 9626

Date October 18, 1991

OFFICE OF THE COUNTY RECORDER
MCLEOD COUNTY, MINNESOTA.

I hereby certify that this document was filed in this office at 1 o'clock P. M. on the 21st day of Oct, 1991.

Armen O'Brien, County Recorder
By _____, Deputy

Document No. 241621

NORTHEAST corner, Section 24, Township 117 North, Range 28 West

Certificate of Location of Government Corner

This corner was originally set by the government in 1855. John Ryan "set post with trench" in a marsh.

1968. McCombs Knutson Associates (Dickman Knutson, county surveyor) found an iron pipe and replaced it with a McLeod County cast iron monument. They took reference ties.

October 18, 1990. Monument had been destroyed by road construction and no reference ties remaining. We re-set the corner (a $\frac{1}{2}$ inch diam. iron pipe) using our 1977 distance from the north quarter corner of Section 24. We took new available reference ties.

EAST QUARTER corner, Section 24, Township 117 North, Range 28 West

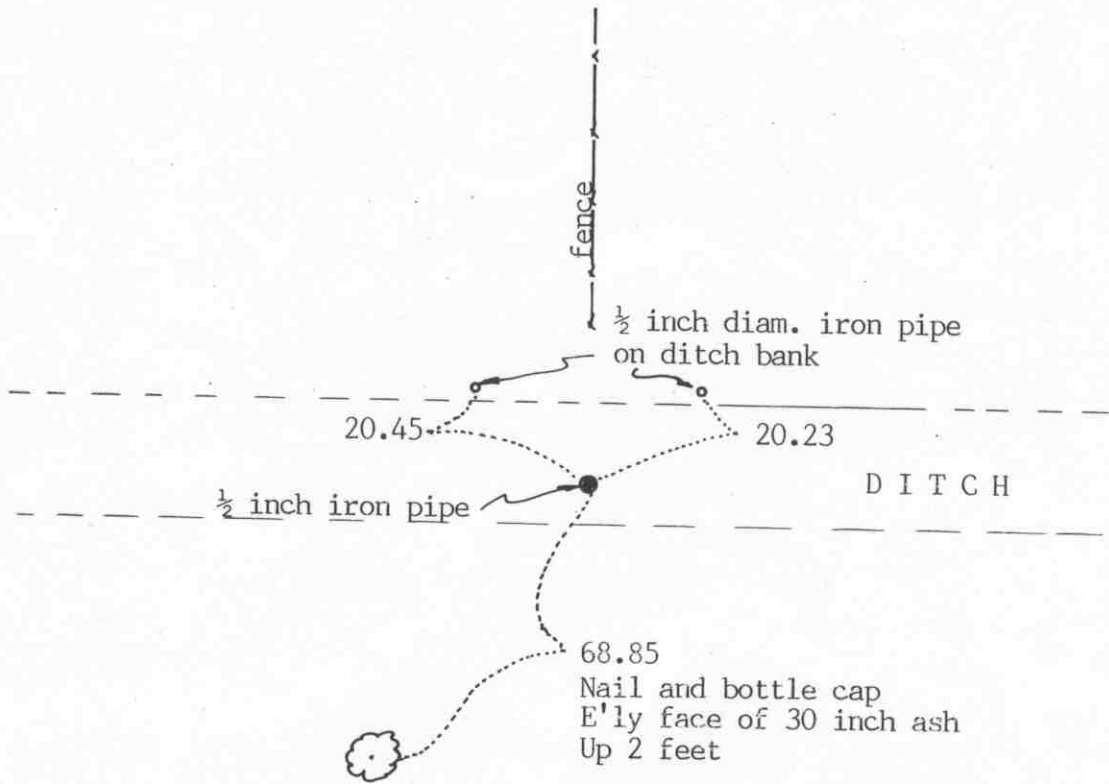
Certificate of Location of Government Corner

SKETCH OF REFERENCE TIES (NO SCALE)



SECTION 24, T. 117, R. 28

SECTION 19, T. 117, R. 27



Corner is about 4 feet south of the center of the ditch

Statement of evidence relative to this corner location on sheet 2

I hereby certify that this document was prepared by me or under my direct supervision.

Willard Pellinen

Willard Pellinen
McLeod County Surveyor
License No. 9626

Date October 18, 1991

OFFICE OF THE COUNTY RECORDER
MCLEOD COUNTY, MINNESOTA.

I hereby certify that this document was filed in this office at 1 o'clock P.M. on the 21st day of Oct, 1991.

Carmen Ostlie, County Recorder

By _____, Deputy

Document No. 241622

EAST QUARTER corner, Section 24, Township 117 North, Range 28 West

Certificate of Location of Government Corner

1855. This corner was not set by the government. Corner fell in an impassable marsh, so John Ryan set a witness post 10.02 chains north of the quarter corner.

December, 1968. McCombs Knutson Associates (Dickman Knutson, county surveyor) set a McLeod County cast iron monument at the intersection of fences running north, south, east and west. Adjoining land owners have accepted this as the quarter corner.

October 18, 1990. The monument had been destroyed by construction of a ditch running east-west. Only one reference tie remained. We set a $\frac{1}{2}$ inch diameter iron pipe, using the one remaining tie and a fence running north. We took available reference ties. The corner falls in the ditch, about 4 feet south of the center.

There being no evidence to the contrary, we accept the location as set by Knutson (at the fence intersection) as marking the quarter corner.

Certificate of Location of Government Corner

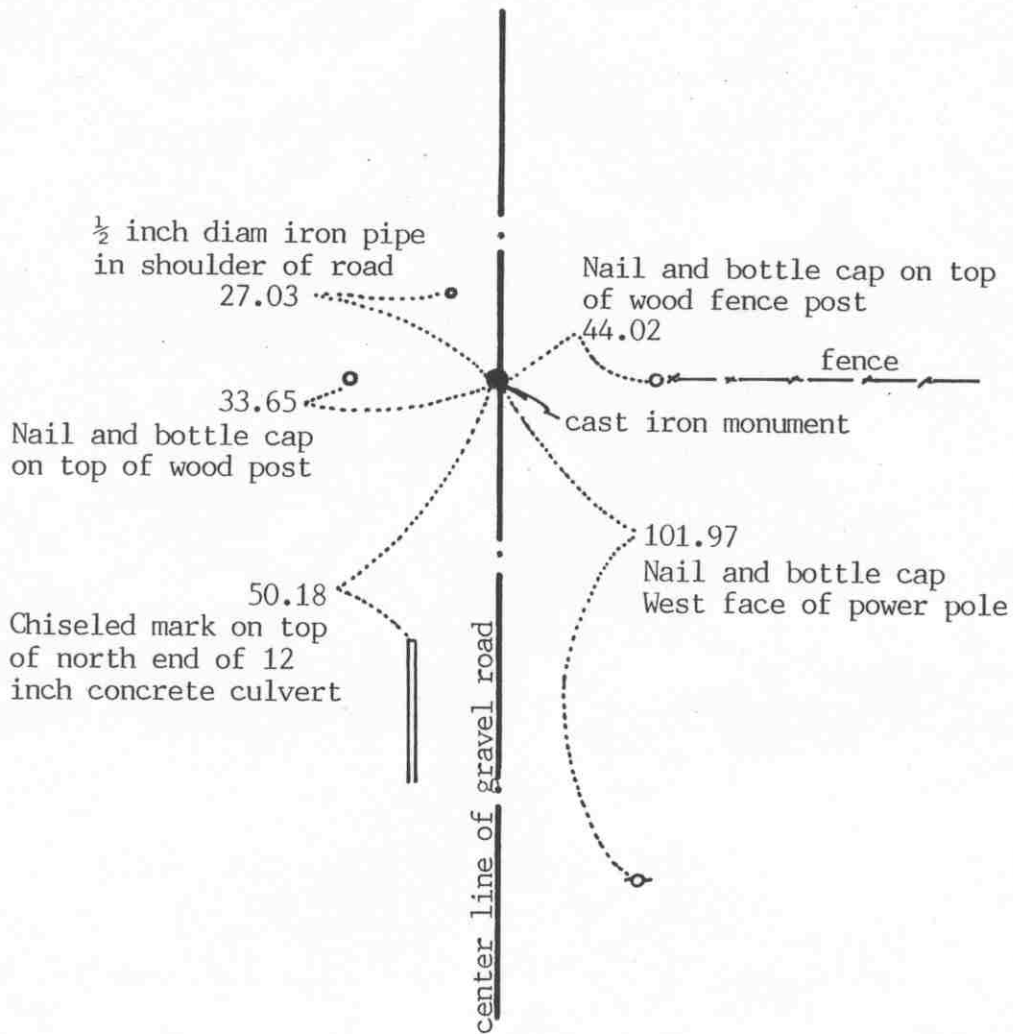
SKETCH OF REFERENCE TIES

(NO SCALE)



SECTION 20

SECTION 21



Statement of evidence relative to this corner location on sheet 2

I hereby certify that this document was prepared by me or under my direct supervision.

Willard Pellinen

Willard Pellinen
Land Surveyor
Minnesota Registration No. 9626

Date Oct. 5, 1992

OFFICE OF THE COUNTY RECORDER
COUNTY, MINNESOTA.

I hereby certify that this document was filed in this office at 9 o'clock A.M. on the 19th day of Oct, 1992.

Carmen Ostlie Mulder County Recorder

By _____, Deputy

Document No. 248337

Certificate of Location of Government Corner

1856. This corner was established by E.N. Darling of the General Land Office. He set a post, in a wet marsh, and marked 2 aspens for bearing trees.

June 23, 1977. McCombs Knutson Associates (Dickman Knutson, county surveyor) chained the east line of Section 20 and set a temporary quarter corner on the center line of the north-south road on the westerly extension of a fence to the east.

Fred Debner, who lives in the southeast quarter of Section 20 said when the road was built about 36 years ago, there was a wood post at the corner.

June 28, 1977. Knutson dug for the corner at the temporary corner, John Tupa from Hutchinson with a backhoe. They found a 10 inch diameter stone down 1 foot below the road surface. They tied it off and found a 5 inch diameter wood post below the stone, large stones around the post.

July 5, 1977. Knutson set a spike at the corner and took additional reference ties.

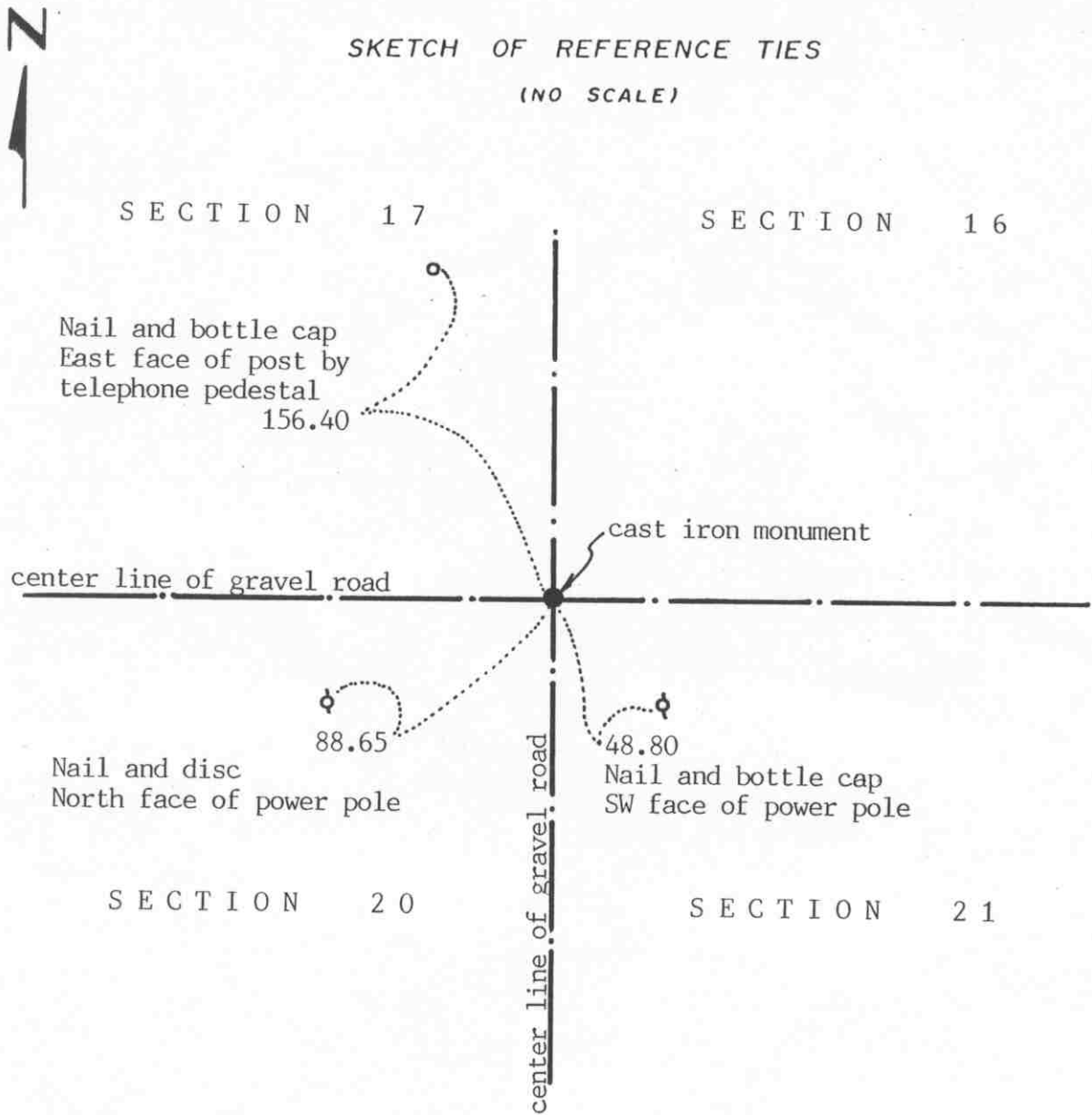
August 30, 1978. Knutson set a McLeod County cast iron monument at the corner.

March 6, 1992. We found the monument in good condition down 5 inches below the road surface. We took new reference ties.

The monument set by Knutson is accepted as marking the location of the quarter corner. It fits occupation lines, the center line of the road and the fence to the east, and it perpetuates the location of older monuments, the stone and wood post.

Certificate of Location of Government Corner

SKETCH OF REFERENCE TIES
(NO SCALE)



Statement of evidence relative to this corner location on sheet 2

I hereby certify that this document was prepared by me or under my direct supervision.

Willard Pellinen
Willard Pellinen
Land Surveyor
Minnesota Registration No. 9626
Date October 5, 1992

OFFICE OF THE COUNTY RECORDER
COUNTY, MINNESOTA.

I hereby certify that this document was filed in this office at 9 o'clock A.M. on the 19th day of Oct, 1992.

Carmen Estlie Nudler County Recorder

By _____, Deputy

248336

Document No. _____

Certificate of Location of Government Corner

1856. This corner was originally set by E.N. Darling of the General Land Office. He set a post and marked an elm, 2 ironwoods and a maple for bearing trees.

May, 1935. Field notes of the County Highway Department show a stone with a hub on top at the corner.

January 14, 1972. Ben Mochinske, 51 years old, had lived in the Northeast Quarter of Section 20 all his life, said when the road was built in 1936 a stone was found at the corner.

May 9, 1972. McCombs Knutson Associates (Dickman Knutson, county surveyor) dug for the corner. They found a stone, 8 inches by 8 inches by 12 inches, set on end, a wood stake or hub over the stone. Below this stone, they found a limestone, 8 inches by 8 inches by 15 inches.

October 30, 1972. Knutson set a McLeod County cast iron monument at the corner.

March 6, 1992. We found the monument in good condition down 6 inches below the surface of the road and we took new reference ties.

The monument set by Knutson is accepted as marking the correct location of the section corner. It fits occupation lines, the center line intersection of the roads, and it perpetuates older monuments, the found stones.

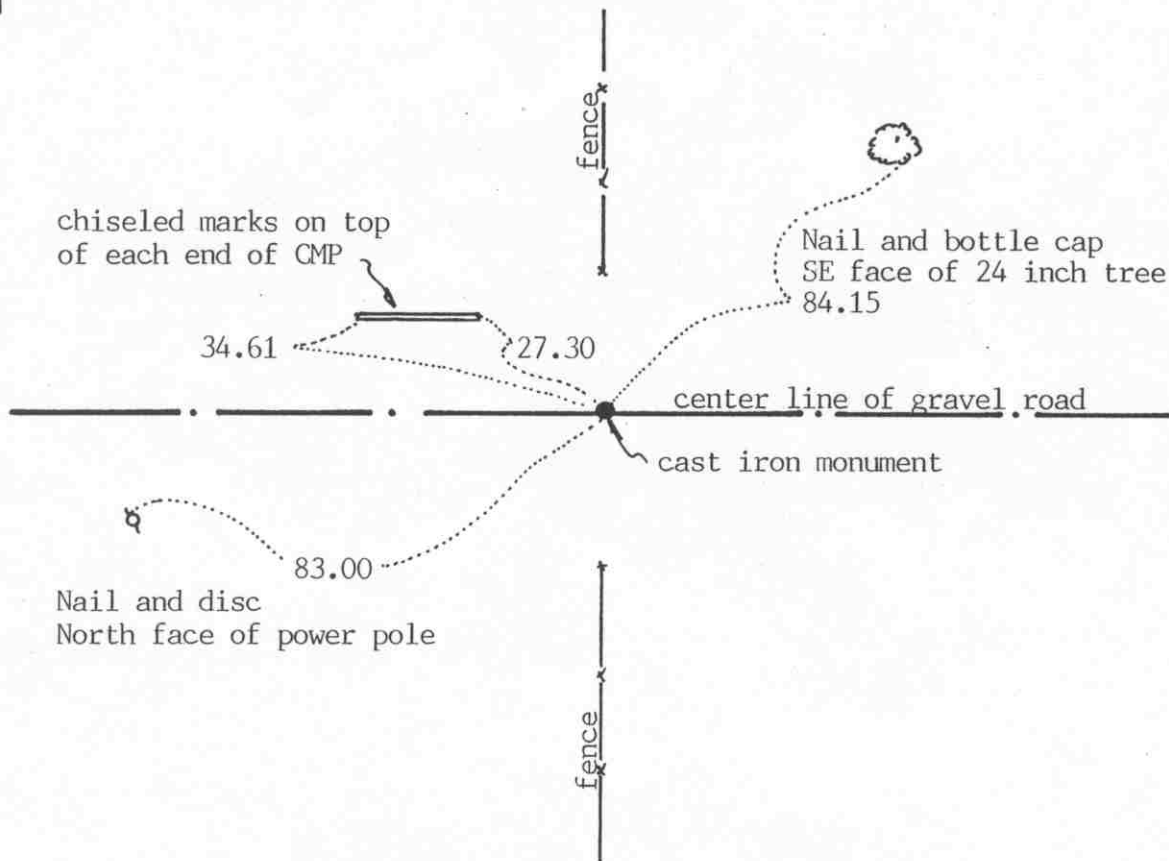
Certificate of Location of Government Corner



SKETCH OF REFERENCE TIES

(NO SCALE)

SECTION 17



SECTION 20

Statement of evidence relative to this corner location on sheet 2

I hereby certify that this document was prepared by me or under my direct supervision.

Willard Pellinen

Willard Pellinen
McLeod County Surveyor
License No. 9626

Date October 4, 1992

OFFICE OF THE COUNTY RECORDER
MCLEOD COUNTY, MINNESOTA.

I hereby certify that this document was filed in this office at 9 o'clock A.M. on the 7th day of October, 1992.

Farmer Ollie, County Recorder

By _____, Deputy

Document No. 248104

NORTH QUARTER corner, Section 20, Township 117 North, Range 27 West

Certificate of Location of Government Corner

1856. E. N. Darling of the General Land Office established this corner. He set a post and marked a linden tree and a maple tree for bearing trees.

May, 1899. E. L. Hihhins, county surveyor, found a post and a bearing tree.

1935.. Highway Department field notes show a stone at the corner at a fence intersection.

January 13, 1972. Mr. Oscar Quast, 46 years old, said when he was a boy, when the road was built, there was a stone at the corner and some wood chips were dumped at the corner. He says the fences running north and south are on the north-south quarter lines.

May 9, 1972. Dickman Knutson, county surveyor, dug for the corner, John Tupa from Hutchinson with a backhoe. They found a stone, 8 inches by 8 inches by 16 inches, set on end, and lots of rotted wood chips around the stone. There was a 2 inch by 4 foot long iron pipe beside the stone. Knutson removed the stone and iron pipe to make room for the monument.

October 21, 1972. Knutson set a McLeod County cast iron monument at the corner and took additional reference ties.

March 6, 1992. We found the monument in good condition and checked the reference ties.

The monument set by Knutson is accepted as marking the correct location of the quarter corner. It is probably the same stone which the highway department found in 1935 before the road was built, and the same stone seen by Mr. Quast when the wood chips were deposited.

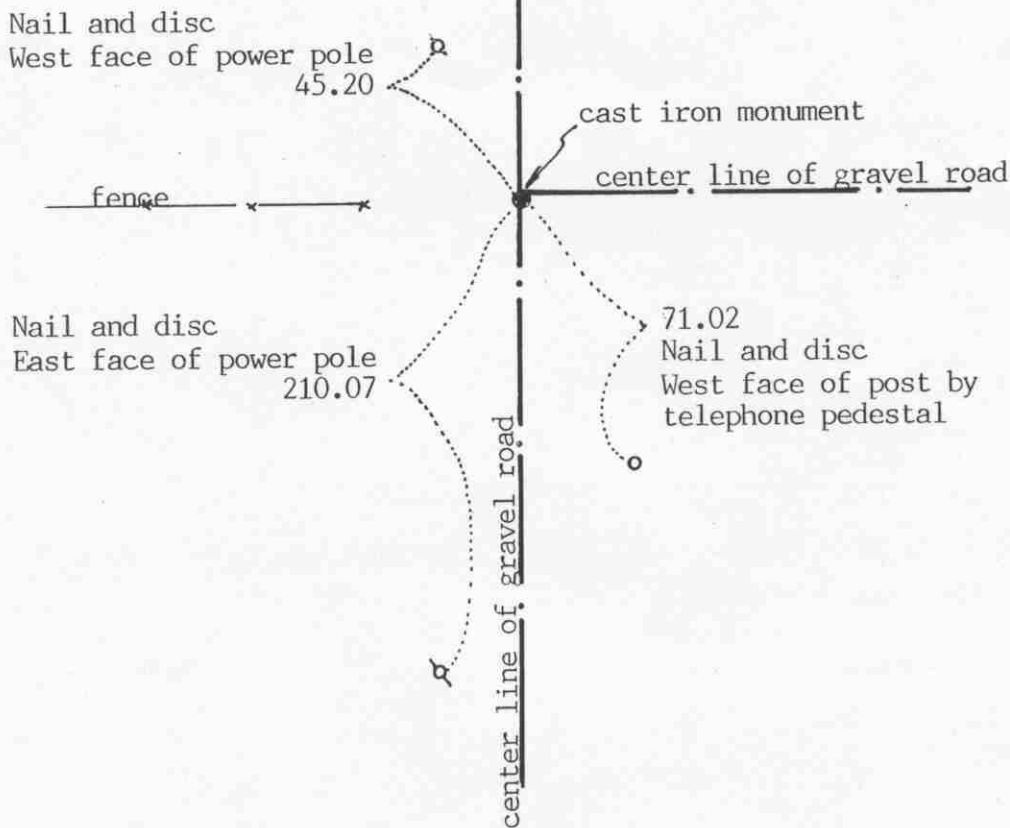
Certificate of Location of Government Corner



SKETCH OF REFERENCE TIES
(NO SCALE)

SECTION 21

SECTION 22



Statement of evidence relative to this corner location on sheet 2

I hereby certify that this document was prepared by me or under my direct supervision.

Willard Pellinen
Willard Pellinen
McLeod County Surveyor
License No. 9626

Date October 10, 1992

OFFICE OF THE COUNTY RECORDER
MCLEOD COUNTY, MINNESOTA.

I hereby certify that this document was filed in this office at 9 o'clock A.M. on the 19th day of Oct, 1992.

Carman Helie Mulder County Recorder

By _____, Deputy

Document No. 248339

Certificate of Location of Government Corner

1856. E. N. Darling of the General Land Office established this corner. He set a post and marked an elm and a linden for bearing trees.

August 10, 1946. Fred Koenig survey shows the corner to be on the center line of the north south road in line with a fence to the west. He measured 2628 feet to the northeast corner of Section 21.

July 31, 1972. Mr. Alois Remer, 73 years old and had lived in the Northeast Quarter of Section 21 all his life says the center line of the north south road in line with the fence to the west is the corner. He says the fence has been there as long as he can remember.

McCombs Knutson Associates (Dickman Knutson, county surveyor) dug for the corner but found no evidence of the corner. They set an iron pipe at the center line of the road in line with the fence to the west and took available reference ties.

October 22, 1973. Knutson set a McLeod County cast iron monument at the corner. They measured 2628 feet to the northeast corner of the section.

March 6, 1992. We found the monument in good condition and checked the reference ties.

There being no evidence to the contrary, the monument set by Knutson is accepted as marking the correct location of the quarter corner.

Certificate of Location of Government Corner

SKETCH OF REFERENCE TIES
(NO SCALE)



SECTION 16

SECTION 15

Nail and bottle cap
East face of power pole
182.44

North edge of N'ly post
of T-road sign, up 4 feet
25.90

cast iron monument

center line of gravel road

center line of gravel road

Nail and bottle cap
North face of power pole
244.21

46.78
Nail and bottle cap
East face of power pole

SECTION 21

SECTION 22

Statement of evidence relative to this corner location on sheet 2

I hereby certify that this document was prepared by me or under my direct supervision.

Willard Pellinen

Willard Pellinen
Land Surveyor
Minnesota Registration No. 9626

Date October 9, 1992

OFFICE OF THE COUNTY RECORDER
COUNTY, MINNESOTA.

I hereby certify that this document was filed in this office at 9 o'clock A.M. on the 19th day of Oct, 1992.

Carmin Helie Mulder, County Recorder

By _____, Deputy

Document No. 248338

Certificate of Location of Government Corner

1856. E.N.Darling of the General Land Office originally established this corner. He set a post and marked a maple, 2 linden trees and an ironwood tree for bearing trees.

August 10, 1946. Fred Koenig found a stake at the corner.

December 13, 1971. McCombs Knutson Associates, Dickman Knutson, county surveyor, set a temporary section corner at the center line intersection of the roads.

May 10, 1972. Knutson dug at the temporary corner, John Tupa from Hutchinson with a backhoe. Down $4\frac{1}{2}$ feet below the road surface they found a 6 inch by 6 inch by 12 inch stone, set on end, a rotted wood stake beside the stone. They took available reference ties.

July 31, 1972. Knutson set a McLeod County cast iron monument at the corner.

March 6, 1992. We found the cast iron monument in good condition down 10 inches below the road surface and took new reference ties.

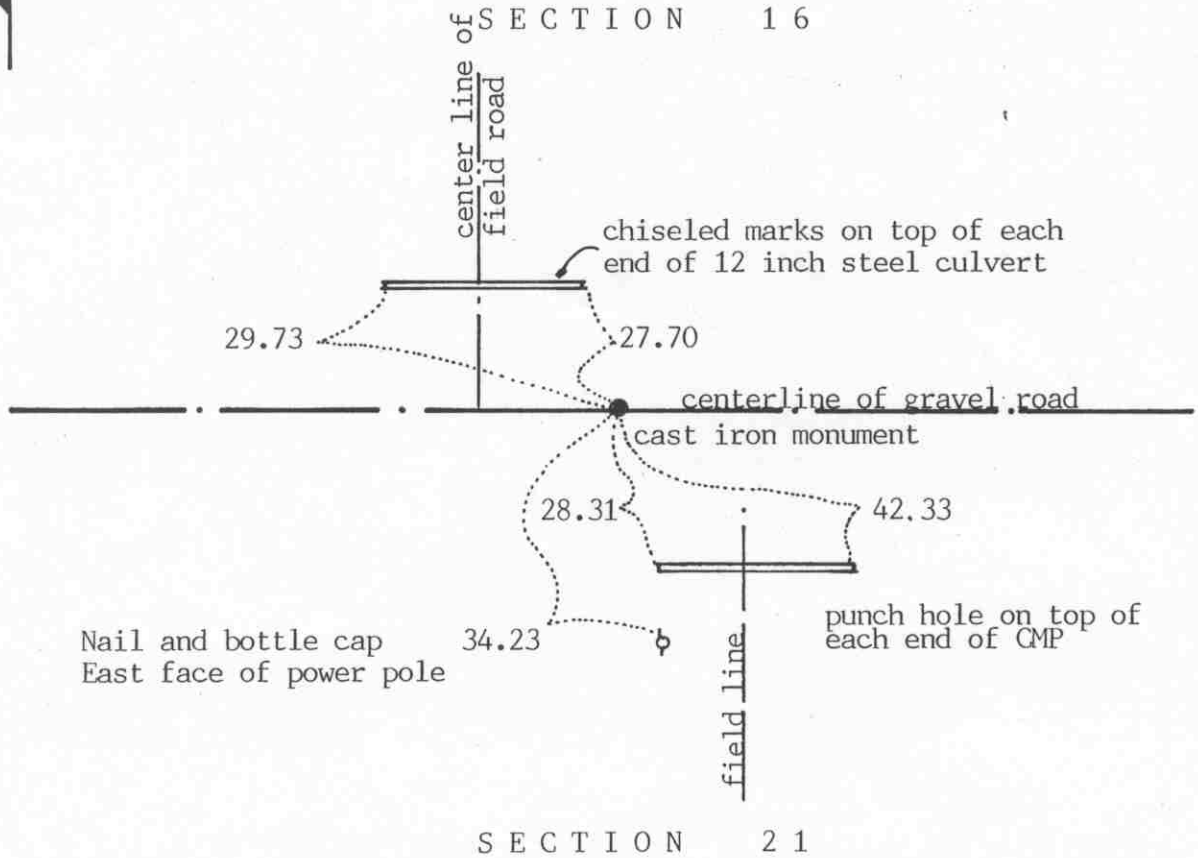
The monument set by Knutson is accepted as marking the section corner. It fits the occupation lines, the center lines of the roads, and it perpetuates the location of an older monument, the stone.

Certificate of Location of Government Corner



SKETCH OF REFERENCE TIES

(NO SCALE)



Statement of evidence relative to this corner location on sheet 2

I hereby certify that this document was prepared by me or under my direct supervision.

Willard Pellinen

Willard Pellinen
McLeod County Surveyor
License No. 9626

Date Oct. 5, 1992

OFFICE OF THE COUNTY RECORDER
MCLEOD COUNTY, MINNESOTA.

I hereby certify that this document was filed in this office at 9 o'clock A.M. on the 17th day of Oct, 1992.

(Armen) Helie Mulder County Recorder

By _____, Deputy

Document No. 248340

Certificate of Location of Government Corner

1856. E. N. Darling of the General Land Office established this corner. He set a post and marked an elm and an aspen for bearing trees.

January 14, 1972. Mr. Alfred Bayerl, 60 years old and had lived in the Southeast Quarter of Section 16 since 1930, said corner is east of a field road running north. The field road is all in the Southwest Quarter of Section 16.

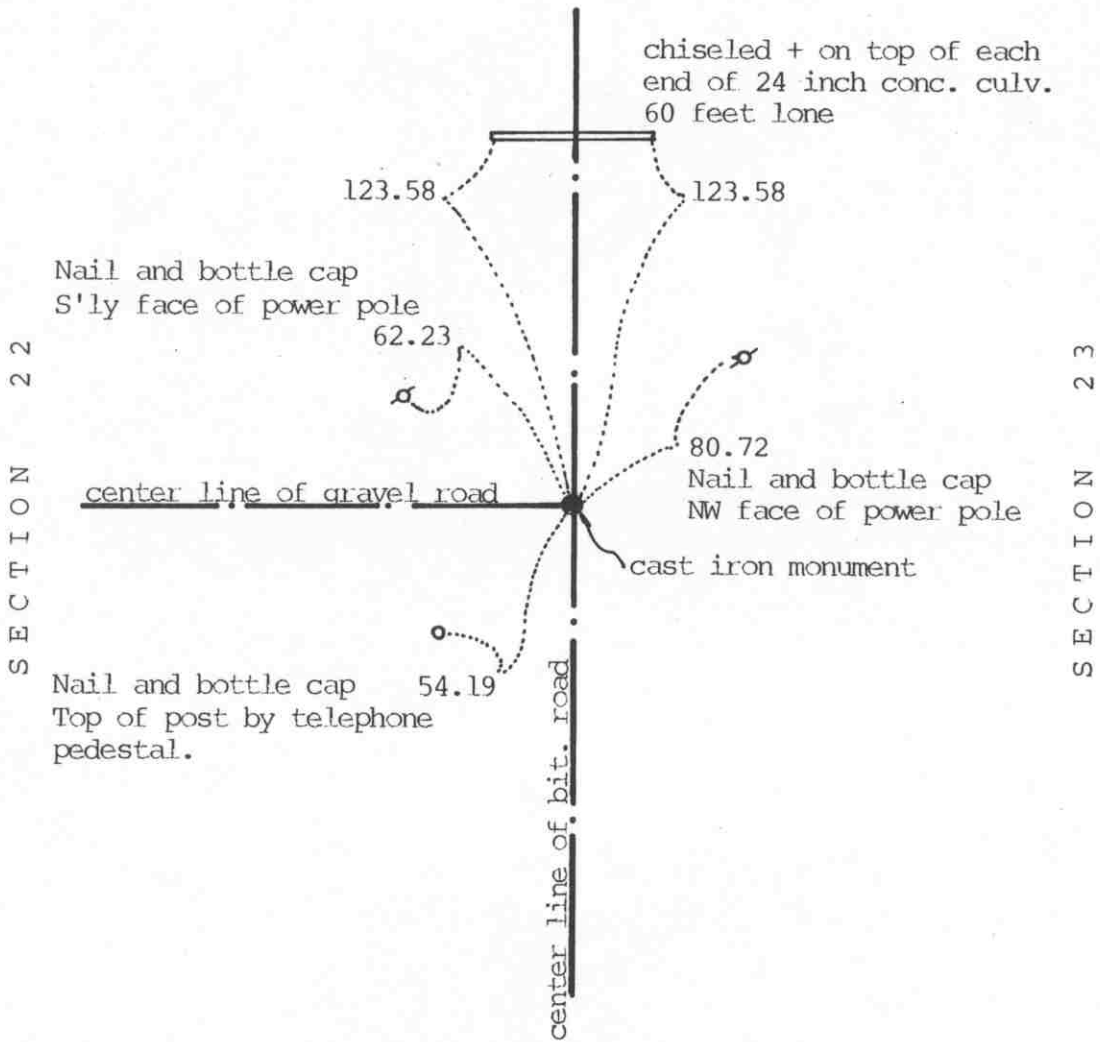
May 10, 1972. McCombs Knutson Associates (Dickman Knutson, county surveyor) dug for the corner on the center line of the east-west road, east of the field road running north. They found a small, rotted wood stake down 4 feet below the road surface. Possibly the remains of the original corner.

November 1, 1972. Knutson set a McLeod County cast iron monument at the location of the found wood stake.

March 6, 1992. We found the monument in good condition and checked the reference ties.

Certificate of Location of Government Corner

SKETCH OF REFERENCE TIES (NO SCALE)



Statement of evidence relative to this corner location on sheet 2

I hereby certify that this document was prepared by me or under my direct supervision.

Willard Pellinen

Willard Pellinen
McLeod County Surveyor
License No. 9626

Date October 19, 1992

OFFICE OF THE COUNTY RECORDER
MCLEOD COUNTY, MINNESOTA.

I hereby certify that this document was filed in this office at 9 o'clock A.M. on the 26th day of Oct, 1992.

Carmin Holliester Mader, County Recorder

By _____, Deputy

Document No. 248497

EAST QUARTER corner, Section 22, Township 117 North, Range 27 West

Certificate of Location of Government Corner

1856. This corner was originally established by E. N. Darling of the General Land Office. He set a post and marked 2 linden trees for bearing trees.

May 5, 1967. Roy Hansen, county surveyor, found an iron pin at the center line intersection of the roads.

November 20, 1968. McCombs Knutson Associates (Dickman Knutson, county surveyor) used the same iron pin used by Roy Hansen, as the quarter corner.

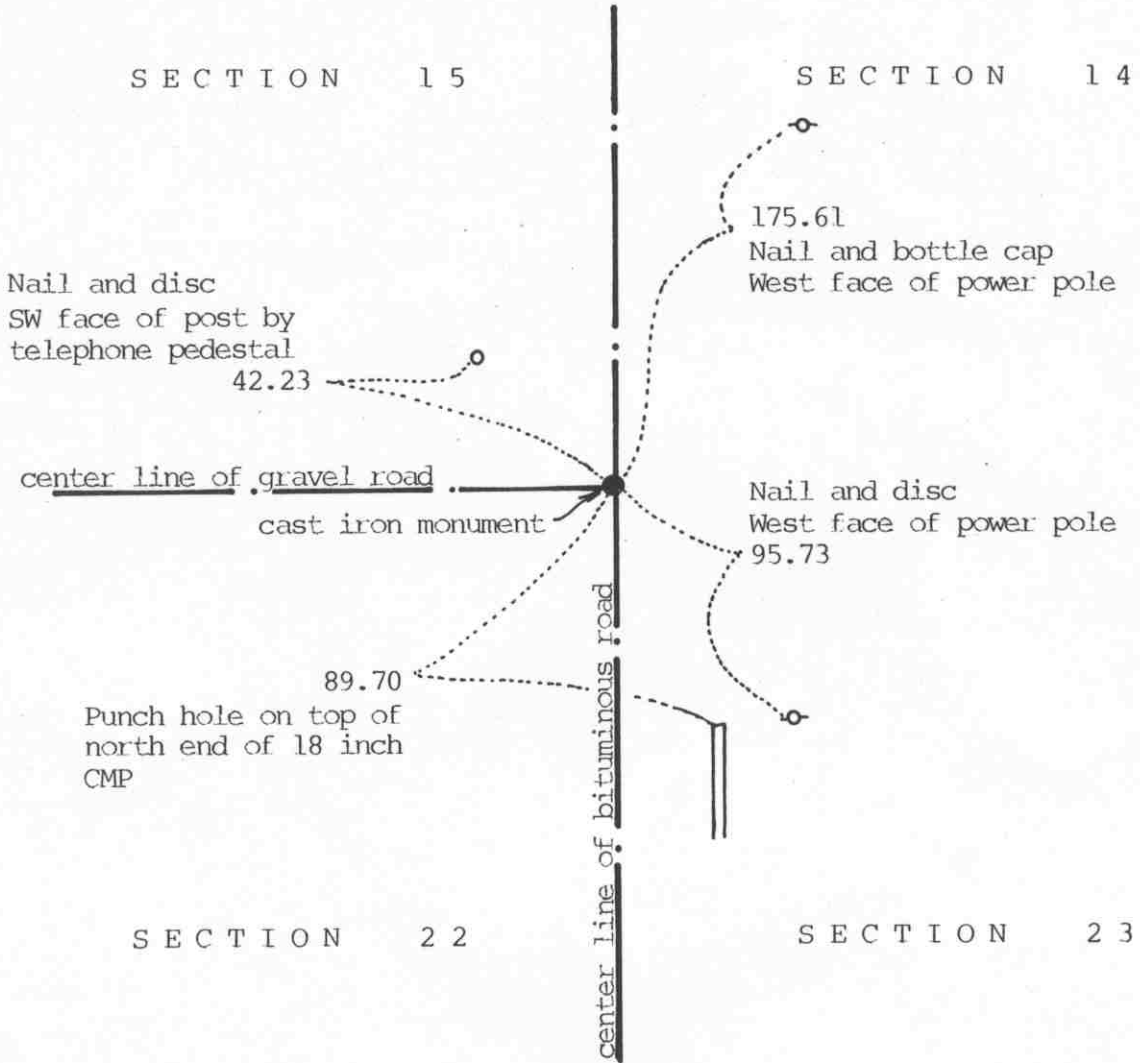
June 14, 1979. Knutson replaced the iron pin with a McLeod County cast iron monument and took available reference ties.

April 16, 1992. We found the monument in good condition and took new reference ties.

This corner is within 3 feet of being on a split between the section corners and within 0.2 foot of being on a straight line.

Certificate of Location of Government Corner

SKETCH OF REFERENCE TIES (NO SCALE)



Statement of evidence relative to this corner location on sheet 2

I hereby certify that this document was prepared by me or under my direct supervision.

Willard Pellinen

Willard Pellinen
McLeod County Surveyor
License No. 9626

Date Oct. 19, 1992

OFFICE OF THE COUNTY RECORDER MCLEOD COUNTY, MINNESOTA.

I hereby certify that this document was filed in this office at 9 o'clock A. M. on the 26th day of Oct, 1992.

Carmen Helie Quisler, County Recorder

By _____, Deputy

Document No. 248496

Certificate of Location of Government Corner

1856. This corner was originally established by E. N. Darling of the General Land Office. He set a post and marked 2 oaks an ash and an elm for bearing trees

May 5, 1967. Roy Hansen, county surveyor, found a railroad spike at the center line intersection of the roads. State Highway No. 261 right of way map shows the corner to be on the intersection.

March 16, 1971. Mr. William Kegler, 50 years old and had lived in the Northeast Quarter of Section 22 all his life, said the center line intersection is the corner. He said the cartway to the west runs along the section line. Mr. Walter Marks, 56 years old, in the Southeast Quarter of Section 15 all his life, agrees with Mr. Kegler.

October 22, 1973. Dickman Knutson, county surveyor, set a railroad spike at the center line intersection and took reference ties.

June 14, 1979. We replaced the railroad spike with a McLeod County cast iron monument.

April 16, 1992. We found the monument in good condition and took new reference ties.

Certificate of Location of Government Corner

SKETCH OF REFERENCE TIES
(NO SCALE)

SECTION 15

Nail and disc
East face of power pole
327.30

cast iron monument

1.58
Nail and disc
NE face of power pole

field line

SECTION 22

field line

621.65
Dent on top of south
end of 24 inch CMP

Nail and disc
East face of power pole
257.15

Statement of evidence relative to this corner location on sheet 2

I hereby certify that this document was prepared by me or under my direct supervision.

Willard Pellinen
Willard Pellinen
McLeod County Surveyor
License No. 9626

Date July 26, 1993

OFFICE OF THE COUNTY RECORDER
MCLEOD COUNTY, MINNESOTA.

I hereby certify that this document was filed in this office at 4 o'clock P.M. on the 5th day of August, 1993.

Carmen Estlie Mulder, County Recorder

By _____, Deputy

Document No. 253994

Certificate of Location of Government Corner

1856. This corner was originally established by the General Land Office. E. N. Darling set a post and marked 2 ironwood trees for bearing trees.

August 12, 1946. Fred Koenig found a stone at the corner and he measured 2662 feet to the northeast corner of the section.

March 16, 1971. Mr. Melvin Cantin, 61 years old and had lived in the Northeast Quarter of Section 22 for 30 years, said there is a stone at the corner, at the intersection of the power pole line running north and south and a field line to the west.

January 5, 1972. McCombs Knutson Associates (Dickman Knutson, county surveyor) found a stone at the location described by Mr. Cantin. This was at approximately the same distance from the northeast corner as Koenig had in 1946.

October 22, 1973. Knutson replaced the stone with a McLeod County cast iron monument and took available reference ties.

The monument set by Knutson is accepted as marking the location of the quarter corner. It fits occupation lines, the power poles and field lines, and it perpetuates the location of an older monument, the stone.

June 15, 1993. We found the monument in good condition and checked the reference ties.

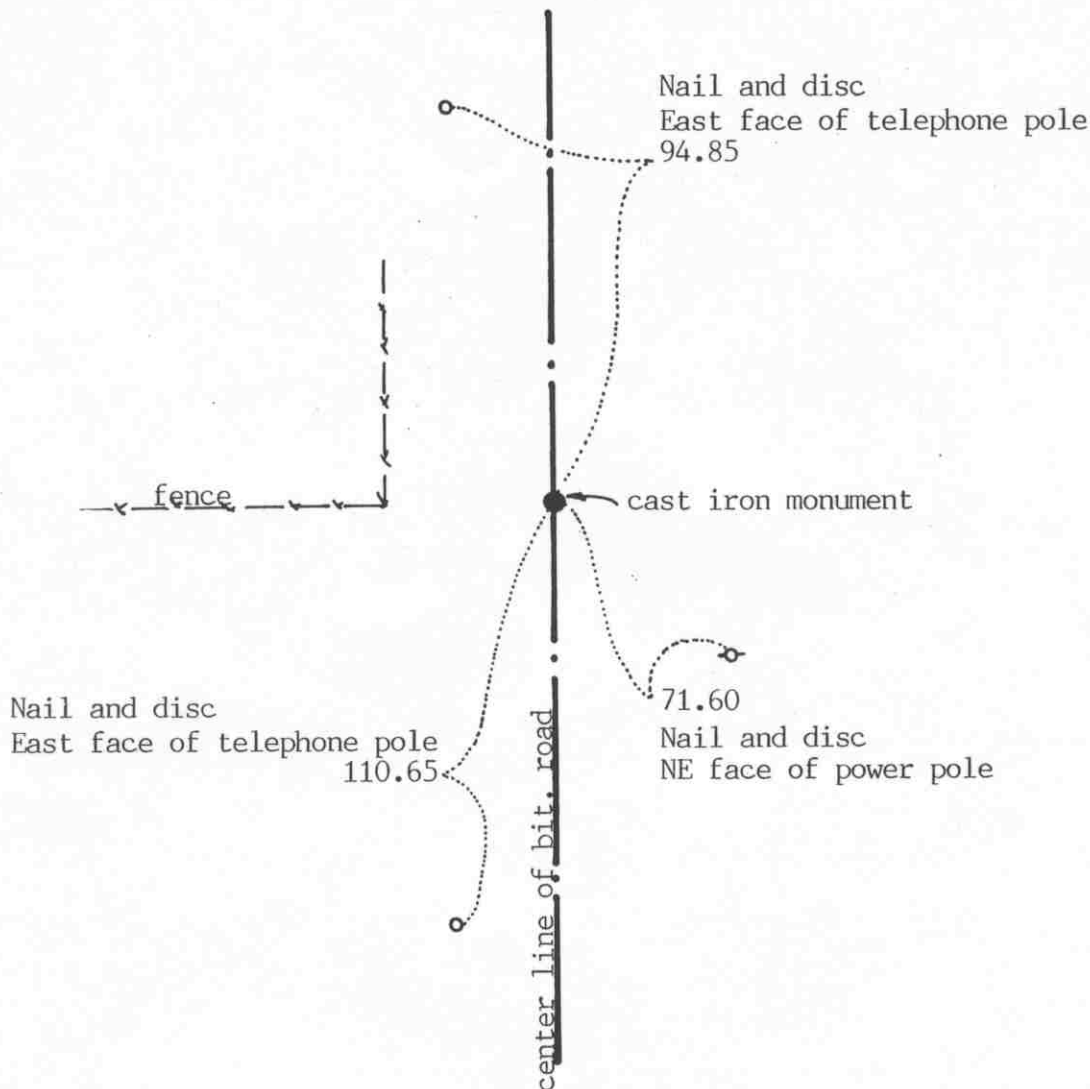
Certificate of Location of Government Corner

SKETCH OF REFERENCE TIES (NO SCALE)



SECTION 23

SECTION 24



Statement of evidence relative to this corner location on sheet 2

I hereby certify that this document was prepared by me or under my direct supervision.

Willard Pellinen
Willard Pellinen
McLeod County Surveyor
License No. 9626

Date Nov. 20, 1992

OFFICE OF THE COUNTY RECORDER
MCLEOD COUNTY, MINNESOTA.

I hereby certify that this document was filed in this office at 9 o'clock A.M. on the 24th day of November, 1992.

Carman H. Liebert, County Recorder

By _____, Deputy

Document No. 249058

EAST QUARTER corner, Section 23, Township 117 North, Range 27 West

Certificate of Location of Government Corner

1856. This corner was originally established by the General Land Office. E. N. Darling set a post and marked a 20 inch and an 8 inch elm for bearing trees.

November 20, 1968. McCombs Knutson Associates (Dickman Knutson, county surveyor) found a 1 inch diameter iron pipe in the center line of the north-south road, on the easterly extension of a fence from the west. This pipe has been used by other surveyors as the quarter corner.

July 30, 1974. Knutson replaced the iron pipe with a McLeod County cast iron monument.

This monument is accepted as marking the location of the quarter corner. It fits occupation lines (the center line of the road and the fence) and it perpetuates the location of an older monument.

This monument is 1.02 feet north of a split between the section corners and 3.27 feet east of a straight line.

November 19, 1992. We found the monument in good condition and checked the reference ties.

Certificate of Location of Government Corner

SKETCH OF REFERENCE TIES

(NO SCALE)

SECTION 14

SECTION 13

Nail and bottle cap
East face of tel. pole
137.45

Nail and disc
North face of power pole
40.34

cast iron monument

Nail and bottle cap
East face of tel. pole
50.08

center line of bituminous road

108.60
Nail and disc
Top of wood fence post

fence

SECTION 23

SECTION 24

Statement of evidence relative to this corner location on sheet 2

I hereby certify that this document was prepared by me or under my direct supervision.

Willard Pellinen

Willard Pellinen
McLeod County Surveyor
License No. 9626

Date Nov. 20, 1992

OFFICE OF THE COUNTY RECORDER
MCLEOD COUNTY, MINNESOTA.

I hereby certify that this document was filed in this office at 9 o'clock A. M. on the 24th day of November, 1992.

Carman O'Brien Mulder, County Recorder

By 249057, Deputy

Document No. _____

NORTHEAST _____ corner, Section 23, Township 117 North, Range 27 West

Certificate of Location of Government Corner

1856. This corner was originally established by the General Land Office. E. N. Darling set a post and marked an oak, 2 lindens and a hickory tree for bearing trees.

March 17, 1971. Willard Kassen, 57 years old, had bought a farm in the Northeast Quarter of Section 23, 26 years ago, said the corner is the center line of the north-south road in line with the power pole line and fence line to the east.

November 17, 1973. McCombs Knutson Associates (Dickman Knutson, county surveyor) dug for the corner. They found an iron pipe and a wood stake below the iron pipe. Knutson set a McLeod County cast iron monument and took reference ties.

March 17, 1985. We found the monument in good condition and took new reference ties.

The monument set by Knutson is accepted as marking the location of the section corner. It fits occupation lines, the center line of the road and the fence line, and it perpetuates the location of an older monument, the iron pipe and wood stake.

November 19, 1992. We found the monument in good condition and checked the reference ties.

Certificate of Location of Government Corner

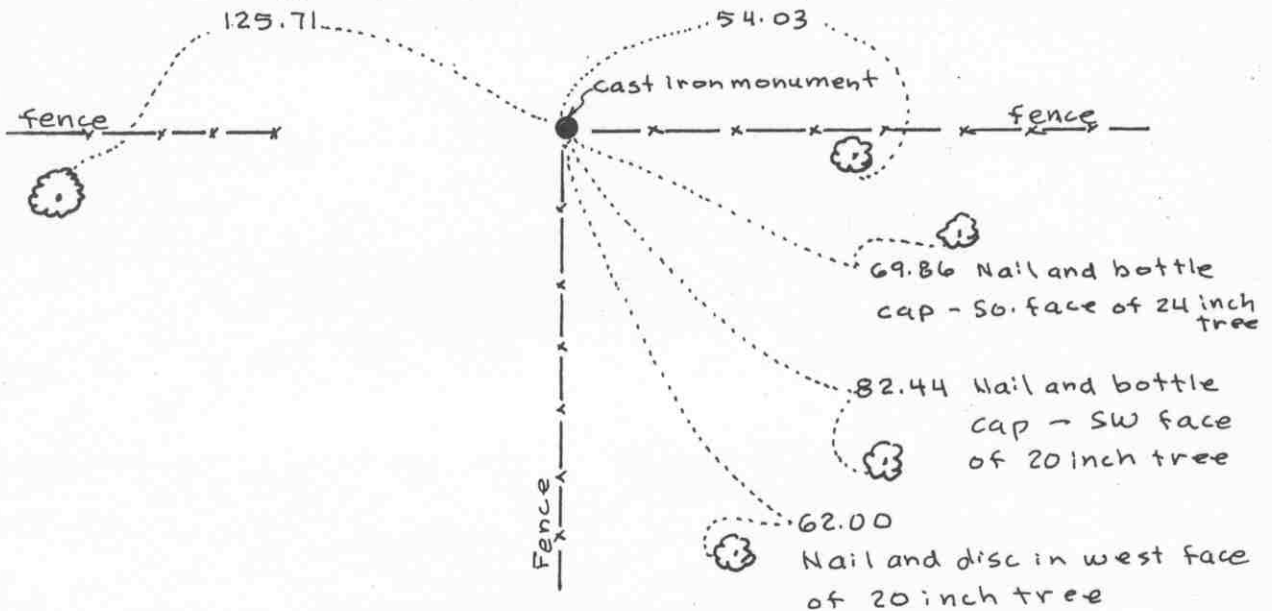
SKETCH OF REFERENCE TIES (NO SCALE)

SECTION 14



Nail and bottle cap
North face of 19 inch tree

Nail and bottle cap
South face of 28 inch tree



SECTION 23

Statement of evidence relative to this corner location on sheet 2

I hereby certify that this document was prepared by me or under my direct supervision.

Willard Pellinen
Willard Pellinen
McLeod County Surveyor
License No. 9626

Date Jan. 30, 1995

OFFICE OF THE COUNTY RECORDER
MCLEOD COUNTY, MINNESOTA.

I hereby certify that this document was filed in this office at 9 o'clock A.M. on the 6th day of February, 19 95.

Carmen Otthi Mulder, County Recorder

By _____, Deputy

Document No. 264041

Certificate of Location of Government Corner

1856. This corner was originally established by the General Land Office. E.N. Darling set a post and marked 2 linden trees for bearing trees.

March 16, 1971. Henry Lason, 82 years old and had lived in the Southeast Quarter of Section 14 for 49 years, said the fence intersection is the corner. He said there is a stone at the fence intersection which is supposed to be the corner.

October 22, 1973. McCombs Knutson Associates (Dickman Knutson, county surveyor) found a stone at fence intersection. The stone was 5 inches in diameter and 8 inches long, set on end. Knutson replaced the stone with a McLeod County cast iron monument and took available reference ties.

The monument set by Knutson is accepted as marking the correct location of the quarter corner. It fits occupation lines, the fences, and it perpetuates the location of an older monument, the stone.

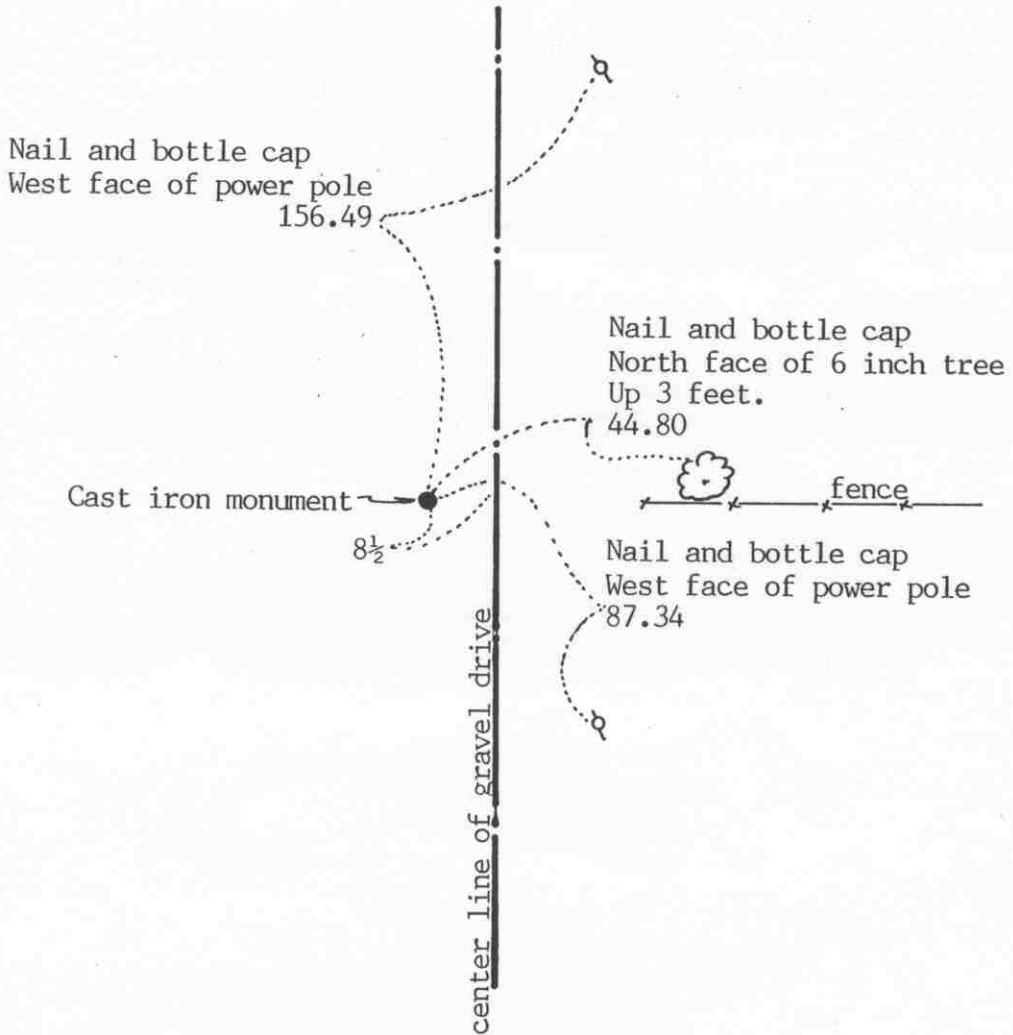
EAST QUARTER corner, Section 24, Township 117 North, Range 27 West

Certificate of Location of Government Corner

SKETCH OF REFERENCE TIES (NO SCALE)

SECTION 24, T. 117, R. 27

SECTION 19, T. 117, R. 26



Statement of evidence relative to this corner location on sheet 2

I hereby certify that this document was prepared by me or under my direct supervision.

Willard Pellinen

Willard Pellinen
McLeod County Surveyor
License No. 9626

Date July 22, 1993

OFFICE OF THE COUNTY RECORDER
MCLEOD COUNTY, MINNESOTA.

I hereby certify that this document was filed in this office at 4 o'clock P.M. on the 27th day of July, 1993.

Armen Collier Mulder, County Recorder

By _____, Deputy

Document No. 253808

EAST QUARTER corner, Section 24, Township 117 North, Range 27 West

Certificate of Location of Government Corner

1855. This corner was originally established by the General Land Office. John Ryan set a post and marked a 10 inch maple and a 12 inch elm for bearing trees.

October, 1971. Mr. Frank Remer, 52 years old and had lived in the East Half of the Northeast Quarter of Section 24 and Mr. Emil Mielke, who lived in the Southwest Quarter of Section 19, Township 117, Range 26, testified that a stone existed at the west edge of the cartway on the extension of an old fence line running east prior to the road being up-graded. When the road was rebuilt, stone was moved. McCombs Knutson Associates, Dickman Knutson, county surveyor, excavated for the corner but found no trace of the stone.

October 29, 1971. Knutson set a McLeod County cast iron monument on a straight line between the section corners on the westerly extension of an existing old fence. Monument is on the west edge of the cartway, $8\frac{1}{2}$ feet west of the center line. The corner falls within a foot of being on a split between the section corners. Knutson took available ties.

The monument set by Knutson is accepted as marking the location of the quarter corner. This location was accepted by the adjoining land owners and falls where the land owners testified a stone used to be.

March 31, 1993. We found the monument in good condition down 6 inches below the gravel surface and took new reference ties.

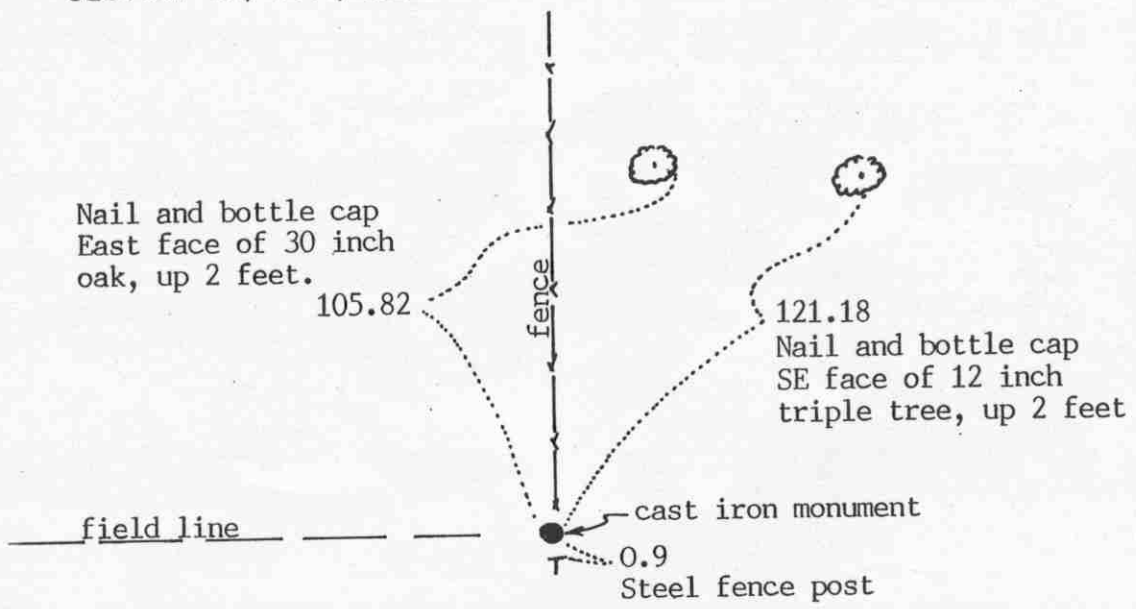
NORTHEAST corner, Section 24, Township 117 North, Range 27 West

Certificate of Location of Government Corner

SKETCH OF REFERENCE TIES (NO SCALE)

SECTION 13, T. 117, R. 27.

SECTION 18, T. 117, R. 26



SECTION 24, T. 117, R. 27.

SECTION 19, T. 117, R. 26.

Statement of evidence relative to this corner location on sheet 2

I hereby certify that this document was prepared by me or under my direct supervision.

Willard Pellinen
Willard Pellinen
McLeod County Surveyor
License No. 9626

Date April 11, 1994.

OFFICE OF THE COUNTY RECORDER
MCLEOD COUNTY, MINNESOTA.

I hereby certify that this document was filed in this office at 9 o'clock A. M. on the 20th day of April, 19 94.

Carmen Helie Mulder, County Recorder

By _____, Deputy

Document No. 259053

NORTHEAST corner, Section 24, Township 117 North, Range 27 West

Certificate of Location of Government Corner

1855. John Ryan of the General Land Office established this corner. He set a post and marked 4 trees for bearing trees.

October 15, 1971. Mr. Remer, 52 years old, has lived in the East Half of the Northeast Quarter of Section 24 all his life, testified his father told him that there is stone marking the section corner. Should be near the fence intersection, fences north and west. Mr. Stifter, who owns the South Half of the Southeast Quarter of Section 13, agrees the fence intersection is the corner.

October 15, 1971. McCombs Knutson Associates (Dickman Knutson, county surveyor) dug around the fence corner and found a stone down 6 inches below the surface. The stone was triangular, with a sharp point up. This was 771.25 feet south of the meander corner south of Campbell Lake. (Government distance 772.20) Knutson measured 2643.20 feet to the east quarter corner of Section 24. (Government distance, 2640 feet)

October 21, 1971. Knutson replaced the stone with a McLeod County cast iron monument and took available reference ties.

The monument set by Knutson is accepted as marking the location of the section corner. It fits occupation lines, the fences north and west, and it perpetuates the location of an older monument, the stone.

January 13, 1994. Found the monument in good condition, flush with surface of ground. No old reference ties remaining. Took new available ties.

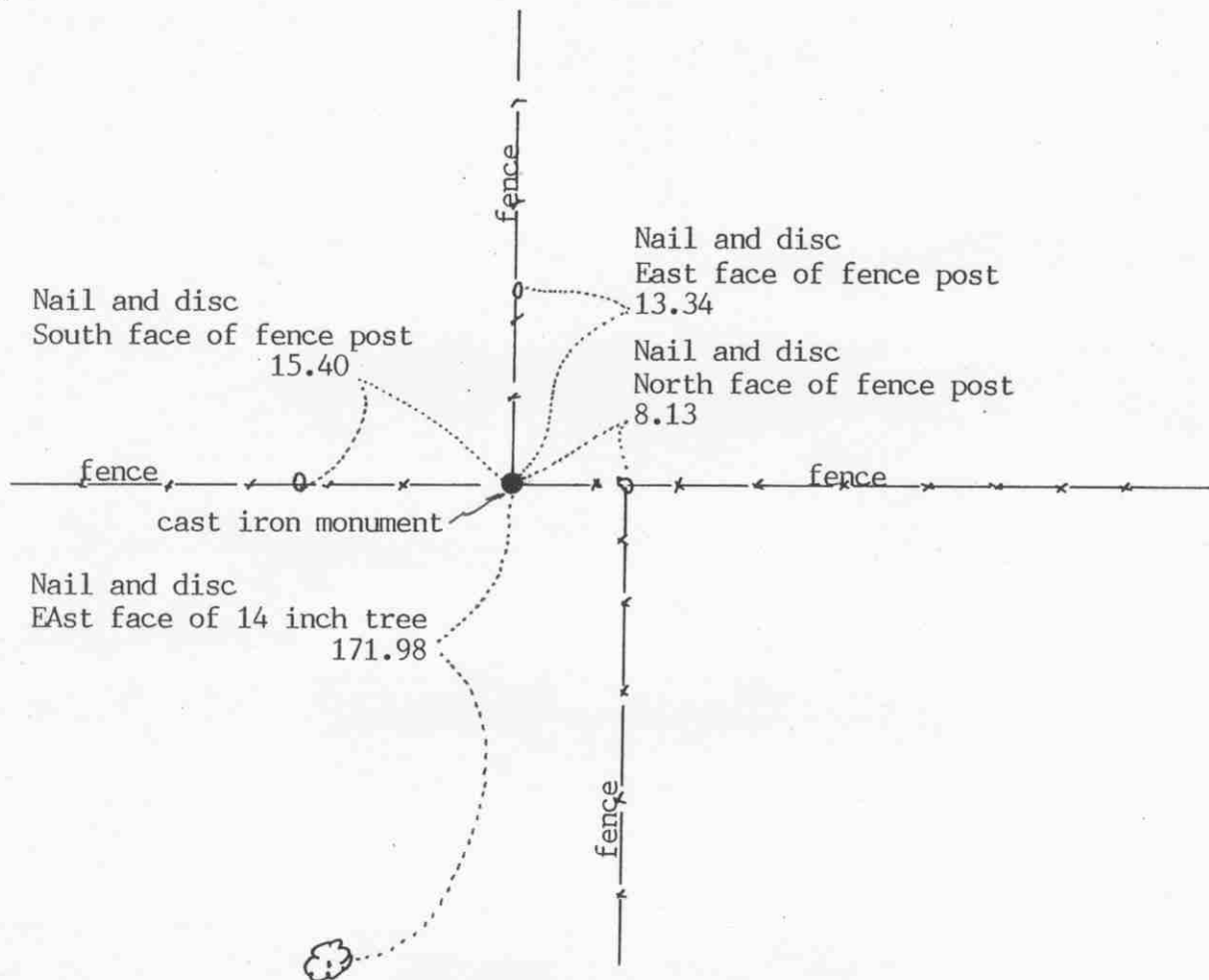
NORTH QUARTER corner, Section 24, Township 117 North, Range 27 West

Certificate of Location of Government Corner

SKETCH OF REFERENCE TIES

(NO SCALE)

SECTION 13



SECTION 24

Statement of evidence relative to this corner location on sheet 2

I hereby certify that this document was prepared by me or under my direct supervision.

Willard Pellinen

Willard Pellinen
McLeod County Surveyor
License No. 9626

Date July 26, 1993

OFFICE OF THE COUNTY RECORDER
MCLEOD COUNTY, MINNESOTA.

I hereby certify that this document was filed in this office at 4 o'clock P.M. on the 5th day of August, 1993.

Carmen Estlie Mulder, County Recorder

By _____, Deputy

Document No. 253995

Certificate of Location of Government Corner

1856. E. N. Darling of the General Land Office established this corner. He set a post, in a marsh, and marked a 30 inch elm and a 20 inch oak for bearing trees.

March 17, 1971. Mr. John Otto, 68 years old and had lived in the Southwest Quarter of Section 13 since 1937, said the fence intersection is the quarter corner. (fences east, west and south) Mr. Alphonse Fiecke, in section 24, agrees with Mr. Otto. Neither man knows why the fence running north is 8 feet west of the corner.

January 6, 1972. McCombs Knutson Associates (Dickman Knutson, county surveyor) measured the north line of Section 24 and set a temporary quarter corner at the fence intersection.

July 30, 1974. Knutson set a McLeod County cast iron monument at the corner and took available reference ties.

The monument set by Knutson is accepted as marking the correct location of the quarter corner. It fits occupation lines (the fences) and adjoining land owners agree on the location.

This corner is 1.35 south of a straight line between the section corners and 6.79 feet west of a split between the section corners.

June 15, 1993. We found the monument in good condition and checked the reference ties.